



Searching for Cavalcante

Eleven Days of Anxiety and Lockdown

Day 1. At a little after noon on Thursday, August 31, Crosslands residents reported receiving a call from readychesco.com, the official notification system for Chester County. A prisoner had escaped from nearby Chester County Prison. In response, Roy Manno, Head of Facilities, phoned all Kendal, Crosslands, and Cartmel residents initiating a lockdown.

Later that day, a photo of the escapee, convicted murderer Danelo Cavalcante, was circulated and was widely reported on the national news. This was the beginning of a campus lockdown that lasted for eleven days and involved everyone who lived, worked, or tried to visit the Kendal~Crosslands Community.



PHOTO BY JIM SALVAS

Ms. S, a Crosslands resident, returning from a lunch date, picked up the phone message. Residents were told to lock windows and doors and stay inside. Ms. S thought it unlikely that a fugitive would risk being seen on Crosslands campus, especially during the day. She kept to

her usual routine, going to dinner at the Center on Thursday evening and enjoying a Friday morning swim.

Day 3. On Saturday morning, September 2, the escapee was seen on Parkersville Road. Responding to a directive from Lisa Marsilio, the Emergency Management Response Plan was activated for the first time in Kendal~Crosslands history. Roy Manno and his staff set up a Command Center to receive and send reports. Weekend staff were called in. Campus Responders were activated to patrol the campus, stand guard at the entrance to Crosslands and at the Crosslands Center's main door. A total of 27 staff members made up the Emergency Response Team.

All campus activities ceased on Day Three. Residents were confined to their apartments and cottages except for short walks and bus rides to the Center to pick up their meals. Staff were told to use the parking lots near the Center and Campus Responders were available to escort staff to and from vehicles.

Residents who were returning to campus could call the Command Center and have someone go through their cottage before they entered. Paul, a weekend staffer, was asked to search a cottage at Cartmel. He said he probably would have had a heart attack if he had encountered the escapee. Luckily, he found no evidence of a break-in.

Day 4. Police activity increased on Sunday September 3, due to possible sightings at Cartmel. Vehicles entering and leaving Crosslands and Cartmel campuses were stopped, and Route 926 was closed from the intersection of

Continued next page...

Searching for Cavalcante, Continued

Route 52 to Parkersville Road. Helicopters circled the Crosslands campus morning noon and night. The voice of Cavalcante's mother, pleading with her son (in Portuguese) to surrender peacefully was broadcast from a helicopter circling the campus. One Crosslands resident remembered that while she couldn't understand the words, she heard the desperation in the voice as it was repeated again and again, underscored by the constant whirling and beating of the helicopters circling overhead. The sound of a mother's anguish brought this resident to tears.

Day 5. Monday, September 4. Security cameras, set up along the fence bordering Crosslands and Longwood Gardens caught images of Cavalcante. Residents whose cottages bordered the Big Woods were on high alert.

Phoebe Driscoll described her emotions. "Doors locked. The murderer is somewhere out there. My cottage ends in a copse of trees and



PHOTO BY JIM SALVAS

then open space. My dense garden could conceal a small man. I overlook the West Meadow. In the ambient light on the meadow, I look through my binoculars, and I can see the soldiers in battle gear with rifles in their hands walking along the bottom of the meadow. I have fear in my gut."

*"I look through my
binoculars, and I can see
the soldiers in battle gear
with rifles in their hands
walking along the bottom
of the meadow.
I have fear in my gut."*

Day 6. At least 500 State Police from all over the state had been called in to join the search. In addition to the helicopters that continued to circle the campus, dogs were brought in from the Border Patrol to search the Big Woods, accompanied by a mounted police unit. The Service Road was closed to residents so traffic wouldn't hinder the search.

Over the eleven days of the siege, getting in and out of Crosslands was a problem for residents, visitors, and staff. Police cars lined up bumper to bumper along Route 1, Route 52, and Route 926, sealing off Longwood Gardens, restricting traffic, and sometimes stopping it altogether.

Ms. M said she was constantly challenged on her way to and from

her job in Hockessin. She tried alternating routes, but was always stopped, asked for identification, and sometimes had her trunk inspected. She said she was never scared, only "inconvenienced." The police were polite, and she thought they and the Emergency Management Team at Kendal~Crosslands had done "an incredible job under the worst conditions."

Day 11. By Sunday, September 9, residents and staff were exhausted. One resident said it was "like Covid only worse." When the Emergency Management Team reported the escapee had stolen a van from a nearby dairy, and was out of the area, everyone breathed a sigh of relief. There had been four possible sightings on the Crosslands-Cartmel campuses during the lockdown, two from staff and two from residents. On follow-up, investigators reported no evidence that the escapee had been on any of our campuses.

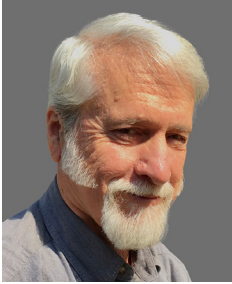
On Wednesday September 13, two weeks after his escape, Cavalcante was finally captured about fifteen miles north of the prison.

We thank our Emergency Management Team and all the staff for their planning, oversight, and care in this time of lockdown and trial.

Lyn Back

From the CRA President

Some of us are troubled by change and anxious when change is coming. But recent changes at Crosslands, such as the new pathways and road improvements, are widely appreciated. We can now safely walk from the Center down Crosslands Drive to just beyond the new Woolman and circle back to the Center on smooth new pavement, happy to see the construction vehicles and piles of earth and stone in the parking lots gone. I'll see you there, coming or going.



David Camp

Preserving the History of Crosslands



The Archives Committee is starting up again now that all the relevant material has been moved to a new storage area in the basement of the Center next to the new CRA Treasurer's office. Those people who are interested in the history of Crosslands might consider joining a team which is beginning to plan for the archiving of Crosslands historical material.

All our mementos are now stored in cabinets in new space on the ground floor of the Center. We need to decide what to archive, and how best to archive it (digitally, of course) so that it is accessible for all present and future Crosslanders. If you have any archiving experience or would like to help, contact Paul Stevens or Julie Knobil.

Julie Knobil



Coming in December

Snow White and Several Dwarfs

A Pantomime Performed by the Crosslands Players and Chorus

Originating in the Middle Ages as a Mummers' Play, pantomime presented classical tales until the 1800s when the plays became based on fairy tales. All were presented in silence — before 1843 English law restricted the number of theaters in which actors could speak. Once the restriction was lifted, pantomime included not only powerful acting, but also songs, jokes, and expressive speech.

Fantasy and humor are essential. In the 17th century, when theatre in England was influenced by the French *commedia de l'arte*, Harlequin was introduced, evolving his character until he became a clown. Laughter replaces fear as the villain's cruel plans are foiled by a ridiculous turn of events.

Additional information will be presented in the December *Chronicle*.

Jane Roberts

Resident Moves

Herbert Blades	Firbank 710
Annalee Cohen	Firbank 711
Nancy H. Evoy	Audland 506
Robin F. Harper	Audland 540
David W. Heckman	Firbank 616

In Memoriam

Edward S. (Ted) Brinton	September 23, 2023
Calvin C. Pickel	October 11, 2023
Margaret "Maggie" McCaskey	October 20, 2023

Land Management Statement

Approved by the KCC Board

Kendal~Crosslands communities are located on the ancestral homelands of the Lenape. What began as land sharing became land appropriation as the number of immigrant settlers increased. Many Lenape departed to form communities elsewhere that preserve and advance their traditions, while many remained and continue to revitalize their culture here. We acknowledge and honor the traditional caretakers of this land, and we strive to understand and model their responsible stewardship.

Walt Herbert, Kendal at Longwood
Judy Heald, Crosslands

Kennett Library Update



The New Kennett Library and Resource Center is now open to the public.

Transportation. Free KCC transportation is available on Mondays, Tuesdays, and Wednesdays. You must sign up at least three days in advance. Sign-up sheets are in a binder on a shelf next to the Crosslands Center reception desk. Tell the driver you are going to the library.

Library Card. A library card is free to all Chester County residents. Bring your driver's license, or a piece of mail addressed to you at your current residence. A card will be issued to you on the spot.

Volunteering. The library offers many volunteering opportunities. Contact Volunteer Coordinator Lou Florence on 610-444-2702 for information.

See kennettlibrary.org or call 610-444-2702 for information and details.

Bluebird 2023 Season Report

As is usually the case the first bird nest in our 26 bluebird nesting boxes appeared in late March: a beautiful pine needle woven "cup" typical of bluebird construction. For the next 22 weeks we inspected, cared for, and witnessed the miracle of 241 baby chicks from three varieties of nesting bird-parents fledge onto our campus. The 2023 nesting season was three weeks shorter than last year due the intense heat in August and resulted in 20 fewer bluebird fledglings than last year.

By the end of the season, we had seen the following:

Bird	Nests	Eggs Laid	Fledglings
Bluebirds	47	207	161
Tree Swallows	12	-	50
House Wrens	4	-	17
Chickadees	2	-	13
Totals	65	207	241

Peg Parker

CROSSLANDS CHRONICLE

Published by and for the residents and administration of Crosslands
P.O. Box 100
Kennett Square, PA 19348
chronicle@crosslandsres.org

Editor: Julie Knobil
Copy Editor: Larry Wood
Design Editor: Steve Sander

Editorial Staff and Proofreaders: Lyn Back, Margaret Camp, Linda Helton, Sally Kaesemeyer, Hedy Knoth, Elizabeth Rhoads, Linda Sander, Diana Stevens, Connie Strickland

Publication and Distribution: Nancy Regenye (Administration), Alice Bucher, Betty Gordon, Jane Krick



Exercise to Music

Crosslands' Longest-Running Resident-Led Exercise Class



PHOTOS BY WYNNE WHARRY

Do you need to loosen your joints and get your blood flowing in the morning? Come to the William Penn Lounge at 9:00 am any Monday, Wednesday, or Friday for a half hour of lively but not strenuous exercise to music. The tunes emanate from a boom box on top of the grand piano.



About half the exercises are done seated, and half standing or moving around the room. The standing exercises are easily adapted to a seated position.

Don't hesitate to come no matter your level of physical fitness. You will leave the class invigorated. Indulge yourself when the class is over

and stroll to the Pond's Edge Café for a delicious cooked-to-order breakfast or for just a cup of coffee and conversation with the breakfast regulars.

Resident Lois Reid has been facilitator/leader of this group for about four years. She was preceded by Ceil Sibinga and Jean Perkins who led the group jointly for many years. Cele says, "Come for the music and stay for the exercise." Nobody can recall who preceded Cele and Jean as leaders. But Lois says, "There is no doubt the group has been in existence for at least 25 years. Obviously, we are doing something right. Stop in and try us out."

Hedy Knoth

Crosslands Website Tidbits

The Crosslands Residents' Web Site at crosslandsres.org contains a lot of valuable information. The **Directories** tab gives access to the following directories:

- **Phone/Email** list of all Crosslands residents. To make a change to your entry in the directory, contact the Front Desk Ambassador.
- **Crosslands Services** phone/email list. Includes medical services, and miscellaneous services like the Front Desk, Hair Salon, Fitness Center, Library, Wood Shop, and others
- **Biographies** of Crosslands residents, including photos.
- **POOCH directory** with biographies and photos of our pets.
- Directories for Kendal at Longwood, Cartmel, and Coniston, and a pointer to the KCC Connect directories including the **Staff Directory**.



Leslie Gifford

Have You Had Your RSV Vaccination?

Probably many of you have not heard about the recent FDA approved RSV vaccine. Like the flu season, the RSV (respiratory syncytial virus) season occurs between late fall and early spring and is a leading cause of respiratory illness in adults (second to the flu) with no specific treatment options or prevention... until now.

The clinical signs of RSV are similar to flu — primarily affecting the upper respiratory passages with a runny nose, cough, congestion, headaches, and general malaise. You feel awful for a few days. Usually when healthy adults get RSV, their symptoms are mild and can feel like a cold.

However, for some people, especially babies, older adults, and those with heart or lung problems or weakened immune systems, it can be more serious, causing problems like pneumonia. Approximately 60,000 to 160,000 RSV-associated hospitalizations and 6,000 to 10,000 RSV-associated deaths occur each year in older adults in the United States. (*New England Journal of Medicine*, April 20, 2023).

Over the past three to four years, two drug companies, Pfizer, and Glaxo-Smith-Kline (GSK), have conducted world-wide studies on their newly developed vaccine candidates. Both companies enrolled about 30,000 patients with half of the patients receiving the placebo. The FDA announced their approval of both the Pfizer and GSK vaccines in March this year.

The Pfizer vaccine was determined to be 67% effective in preventing RSV-related lower respiratory illness, whereas the GSK vaccine was nearly 86% effective according to the FDA press release. Both vaccines caused adverse reactions in a few patients (3-4 cases in 15,000 vaccinated). Remember, no current vaccine is considered 100% safe.

I participated in the Pfizer trial for three years, but never knew whether I was given the actual

vaccine or the placebo. Hence, I chose recently to be treated with a proven vaccine.

Locally, Walgreens has the Pfizer vaccine while the GSK vaccine is available at CVS, Rite-Aid, and Walmart. The KCC policy for the RSV vaccine is as follows as provided by Donna Taylor on September 28, 2023:

We are not going to conduct an RSV on-site clinic. Residents are welcome to get that on their own outside of KCC. As was stated in Lisa's recent communication, the CDC recommends that the decision to administer the RSV vaccine should be based on discussions between the patient and health care provider. This is a new vaccine with risks and side effects that have not been definitively determined. Thus, as a community we are allowing

residents to make their own decisions with their practitioner.

Just one person's perspective; but I would strongly encourage all KCC residents to become more familiar with RSV disease and better understand the benefits and risks associated with the vaccine. My wife and I have already taken the GSK vaccine with minimal side effects. If you decide to become RSV-vaccinated, the effect lasts at least two years.

Robert Whitlock

**Election Day is
Tuesday, November 7**

**In-person voting will be in the
William Penn Room.**

Vote Your Values

Events

Forum

NEOs: A Clear and Present Danger from Space

Presenter: John Conrad, NASA Ambassador

Wed, Nov 8 7:30 pm WPR / TV13

John Conrad followed his childhood interest in space and spaceflight to pursue Astronomical Engineering degrees from the United States Air Force Academy and Purdue University. He has held leadership positions in space programs for the Air Force, NASA, DOE, and private industry.

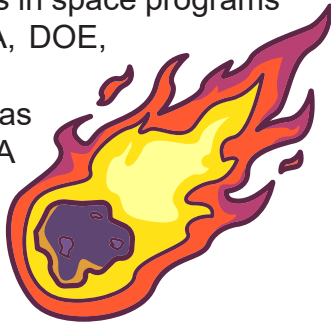
Now retired, he has taken on the role of NASA Solar System Ambassador, bringing audiences the latest news from NASA scientists and engineers, including news about the chunk of rock from the asteroid Bennu, recently delivered to Earth by the NASA spacecraft, OSIRIS REX, launched seven years earlier to orbit Bennu and collect a sample before returning to Earth.

John will talk about Near Earth Objects (NEOs), asteroids, comets, and other space objects that threaten Earth. He will describe the International Planetary Defense program. NASA and other nations' space agencies are developing methods and tools that can prevent the kind of asteroid impact that occurred 65 million years ago, or the Cheleyabinsk asteroid airburst that occurred in 2013.

John will discuss NASA's first mitigation test, the DART spacecraft, which recently was used to demonstrate kinetic deflection of a Near Earth Asteroid.

Note: Please be aware this Forum event will take place on Wednesday, November 8, rather than our usual Tuesday night, due to Election Day on Tuesday, November 7.

Lyn Back



Forum

Myths about Drugs and Prisons Based on Her Personal Experience

Presenter: Keri Blakinger
Reporter for the *Los Angeles Times*

Tue, Nov 21 7:30 pm Zoom in WPR / TV13

Keri Blakinger is a Lancaster, Pennsylvania, native who is now a reporter at the *Los Angeles Times*, where her coverage focuses primarily on the Sheriff's Department but also touches on an array of criminal justice topics across the state.

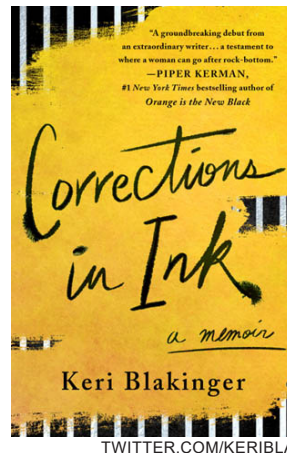
Since joining the paper, she has covered everything from deputy gangs to hurricanes to leaked jailhouse surveillance videos. Earlier this year she spearheaded an investigation into counterfeit drugs in Mexico, traveling to the country half a dozen times to purchase and test medications illegally laced with narcotics.

Before joining the *Times*, Blakinger first made a name for herself as a reporter covering jails and prisons. In addition to working at the *New York Daily News*, the *Houston Chronicle* and The Marshall Project – a nonprofit news organization – she has also reported for the BBC, *The Guardian*, and the *Washington Post Magazine*.

This year, she published a story in the *New York Times Magazine* about death row prisoners who play Dungeons & Dragons in solitary confinement. Prior to becoming a reporter, Blakinger struggled with addiction and spent two years in prison in upstate New York. She detailed those experiences in a book published last year by Macmillan, entitled *Corrections in Ink*.

Robert Whitlock

TWITTER.COM/KERIBLA



TWITTER.COM/KERIBLA

Events

Special Program Sponsored by the Crosslands Welcoming Committee

Artificial Intelligence (AI) and the News Media

Presenter: Ralph Begleiter,
Rosenberg Professor of
Communication Emeritus,
University of Delaware

Wed, Nov 15 7:30 pm WPR



Drawing on his 30 years of broadcast journalism experience, 20 years of teaching communication, journalism, and political science at the University of Delaware, and his ongoing interest in and study of media, Professor Begleiter will provide insights into Artificial Intelligence (AI) and the media.

In recent months, there has been a significant increase in reporting on AI, what it can and cannot do; what its impact will be on our lives. Newsrooms are working on standards for AI use. Political ads with AI will require disclosure on Google and YouTube. A professor of media history at Cal State Northridge knows that new media technologies won't make people obsolete, and so is making AI technology part of her students' classroom experience.

Begleiter will broaden our knowledge and understanding of AI and the Media.
Diana Stevens

Introduction to the Friends Home in Kennett

Presenter: Christine McDonald

Thu, Nov 16 4:00-5:00 pm WPR / TV13



The Friends Worship Group of Crosslands invites you to learn about our neighbors down the road, the not-for-profit Friends Home in Kennett Square. Founded in 1898 by the Religious Society of Friends, the Home is now celebrating its 125th anniversary of service to older adults of modest means.

A signature program of the Home is Montessori Living which puts the compassionate and empowering theories of educator Maria Montessori into practice for residents facing the challenges of mental decline.

Christine McDonald, Executive Director of the Home, and members of its Board of Directors, will focus on the history of the Friends Home, its evolution over the years, its mission, and its vision for the future.

Fran Riddle, Friends Worship Group

Sunflower Shop Plant Sale

The Sunflower Shop will once again host its annual holiday plant sale. There will be poinsettias and cyclamen. The plants will be available at the craft show December 7. Order forms must be returned by November 17 to open box #428. Forms are available in the Sunflower Shop,

Joan Applegate



Events

Diversity, Equity, Inclusion, Belonging 4CC Presentation

**Belonging: A Critical Piece of
Diversity, Equity and Inclusion**

TED Talk by Dr. Carin Taylor

**Fri, Nov 3 7:30 pm
WPR / Zoom / TV13**



WORKDAY.COM

Dr. Carin Taylor shares why Belonging should be a focus of Diversity, Equity, and Inclusion programs and why it is the most important of all in any Diversity, Equity, and Inclusion discussion. She outlines the key ingredients needed to belong and how to create them. Dr. Taylor describes her strategy in great detail and highlights why belonging is a key focus.

Dr. Taylor is Chief Diversity Officer at Workday, an American on-demand financial management, human capital management, and student information system software vendor. She has global responsibility for the development and execution of Workday's inclusion and diversity strategy. Additionally, she serves on the board of Watermark, a nonprofit organization whose mission is to increase the number of women in leadership positions.

Florence Lim

Camera Club

Cruising the Canadian High Arctic

Presenters: Leslie and Warren Gifford

Fri, Nov 17 7:30 pm WPR / TV13



In 2019 Leslie and Warren Gifford enjoyed eighteen days in Iceland, Greenland, and Nunavut, exploring the Canadian High Arctic while based on the National Geographic Explorer, a Lindblad ship. They will share with us not only their experiences watching arctic fauna (e.g., whales, polar bears, seals) but also seeing and learning about modern and traditional Inuit customs, glaciers, icebergs, climate change, and ongoing arctic research.

Please join us for a stimulating evening of photographs, some video, and spirited commentary.

Bob Suter

Events

Tuesday Edition

The Battle of Gettysburg

Presenter: Art Smith

Tue, Nov 14 11:00 am WPR / TV13

Allow me to transport you back in time to the hot and steamy summer of 1863 in south central Pennsylvania. The Army of Northern Virginia, 75,000 strong, is marching toward the small market crossroads town of Gettysburg from the West and North. The Army of the Potomac, 95,000 in number, is approaching from the South and East. They collide at Gettysburg.



**Major Robert Maxwell,
Dentist from Kennett
Square, Cousin**

The three-day battle that results will determine the destiny of the American Republic and will shape tens of thousands of family histories across the United States for generations to come.

Join us as we explore the personal stories of five soldiers, members of my family, serving in the Union Army and their actions as they fought the Battle of Gettysburg.

Art Smith

Special Program

Tunes We Treasure

Leader & Pianist: Jerry Daghir

Sat, Nov 11 7:30 pm WPR&L



PHOTO BY PAUL STEVENS

"New time of year, new residents, new songs," may be the ideal way to describe Jerry Daghir's latest Tunes We Treasure program — which he has been preparing since April's Tunes We Treasure II. Jerry has created a program of familiar songs to remember the date, Veteran's Day, and the end of harvest time.

Don't miss the opportunity to join friends and neighbors in singing old favorites like *Shine on Harvest Moon*, *Try to Remember*, *Supercalifragilistic-expialidocious*, *Don't Sit Under the Apple Tree with Anyone Else but Me*, and *Somewhere My Love*. Once again, Jerry will energize the William Penn Room and Lounge audience as he skillfully plays the piano, and encourages all to smile, sing, tap their toes, and clap their hands.

Diana Stevens

Worth Center Open House

Fri, Nov 3 1:30-3:00 pm Worth Center Light Refreshments

Now that we are all settled in, please join us at the Worth Center to see the new administrative offices for Finance, IT, Sales and Marketing, and Human Resources.

Transportation will be available with pick up from Kendal at Longwood and Crosslands

Center main entrances during the posted times. Parking is limited at the Worth Center. Coniston and Cartmel residents are encouraged to carpool or get the bus at Crosslands main entrance. RSVP not required. Please note that there is no elevator to the second floor.

Events

Spiritual Life Committee

Gratitude, A Choice

Presenters: Lathie Gannon and
Lowell McMullin

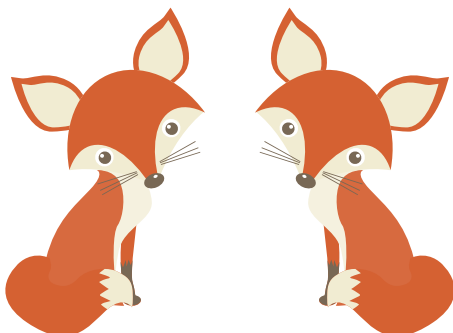
Wed, Nov 15 3:30 pm WPR / TV13



Gratitude is especially relevant for today's chaotic times. Gratitude includes being open to the small ordinary things that warm the heart and to the important things that change our lives.

This is a community sharing event. There will be a presentation about gratitude followed by a period of discussing and sharing what gratitude means in our own lives. Joining us will be the "Gratitude Tree."

Atala Toy, Chair, Spiritual Life Committee



CREATIVEFABRICA.COM

Memory Screening Day

Wed, Nov 8 1:00-3:00 pm Resident Care



A memory screening is a simple and safe "healthy brain checkup" that tests memory and other thinking skills. Screenings will be conducted by Kendal-Crosslands Speech-Language Pathologists. Each screening will take approximately 10 to 15 minutes.

Call 610-388-5501
to schedule your appointment.

So You Think You Know Crosslands



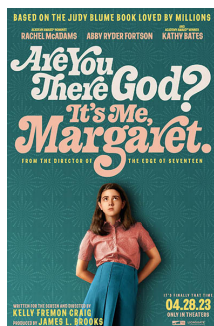
PHOTO BY BOB SUTER

Can You Locate This Month's Teaser?

Send your guess to chronicle@crosslandsres.org or put it into the Chronicle's open box.

Events

Movies



All the Way (2016)

Sat, Nov 4 7:15 pm WPR / TV 13

All The Way chronicles Lyndon Johnson's 11-month journey from JFK's assassination to the 1964 election, including the fight to pass the Civil Rights Act, the murder of Freedom Summer volunteers, and the chaotic Democratic Convention. LBJ's legislative skills, honed in the Senate, carried over to his Presidency and the film's scenes of his dealing and power brokering are revelatory. *All the Way* offers us an opportunity to consider his legacy anew. 132 min.

George Helton

Coco (2018)

Thu, Nov 9 7:15 pm WPR / TV13

Coco, a Disney-Pixar film, revolves around the Mexican traditions of the Day of the Dead. Miguel, an aspiring young musician, embarks on an extraordinary journey to the magical land of his ancestors. 105 min.

Linda Leonard

Are You There God? It's Me, Margaret (2023)

Sat, Nov 18 7:15 pm WPR / TV13

Margaret Simon is 11 going on 12 when her family moves from New York City to suburban New Jersey. Her mother is Christian, and her father is Jewish. She has been raised without an affiliation and does not practice an organized religion, although she frequently prays to God in her own words, beginning by saying, "Are you there God? It's me, Margaret." She is beginning to feel uncomfortable with her lack of a religious affiliation. 106 min.

Gale Hamilton

Concerts

Singers from the Academy of Vocal Arts ("AVA") in Philadelphia

Sun, Nov 12 3:00 pm WPR / TV13

We will hear Resident Artists from the Academy of Vocal Arts in Philadelphia ("AVA"), fine professional singers being trained to launch their operatic careers.

This is an exceptional opportunity for us, possible only because one of their Board members is now a resident at Crosslands. These singers (probably two?) are inspiring and breathtaking to hear. Please join us for this one-of-a-kind event.

Anne Gross

Charles Abramovic, Pianist

Tue, Nov 28 7:30 pm WPR / TV13



WWW.LUCERNEFESTIVAL.CH

Charles is one of our cherished longtime performers, who comes to us each year because of his long friendship and professional relationship with Cele Sibinga, a lifetime pianist and resident of Crosslands.

Charles is the chair of the piano department at Temple University's Boyer College of Music, with decades of performances in the United States, Canada, and Europe. Known especially as a chamber musician, last year he brought several of his doctoral students to play with him. Stay tuned to whether he will do the same this time.

Anne Gross

Meet Nancy and Allen Prindle #95

“Choose to be curious,” are apt words to describe Nancy and Allen Prindle who moved to Crosslands from Swarthmore. When the Prindles moved from their home in Ohio to Swarthmore, it was the perfect opportunity for Nancy to learn about Quakerism.

Her great grandmother was a birthright Quaker. Because her great grandmother married a Methodist, and because there was no Meeting in the part of Ohio where they lived, there was little chance to learn about Quakerism. Nancy was curious to understand what Quakerism meant. The Swarthmore Meeting was the ideal place to learn. She chose to join and became active in the Meeting, serving as clerk for Worship and Ministry among other roles.

Allen’s interest in sustainability and climate issues led him to the Crosslands Energy Committee and from there his curiosity led him to find out why the almost year-old 108 Solar panels at Crosslands were not activated. Allen’s weekly communication with the PECO project manager urging the activation of the panels along with communication with the Crosslands administration resulted in the panels finally being activated September 14.

To this day, Nancy and Allen look for opportunities to learn and guide others in learning.

Choosing to be curious led the Prindles to study for advanced degrees. In his senior year at the University of Wisconsin-River Falls, while figuring out what to do next, the decision was fairly easy for Allen, a first-generation college student. He was curious and wanted to continue learning, so he attended graduate school.

At Otterbein University in Westerville, Ohio, where he was an economics professor and academic adviser for 30 years, Allen worked

with many first-generation students and guided them as they “chose to be curious.” Nancy, with a masters in human development education, took her curiosity to a private practice preparing education programs for parents of children who were referred by the court or child welfare agencies.

As active members of the 4-H, Allen and Nancy’s curiosity led them to do “all projects”, including participating in international exchange programs. To this day, they look for opportunities to learn and guide others in learning. Allen is a gardener. He has taken his grandchildren to the Scott Arboretum for one-on-one explorations to pique their curiosity about flora and fauna. Nancy’s love of music and curiosity led her to study the violin as an adult. Later, she was very proud to be a back row violist in the Central Ohio Symphony Orchestra.

Nancy’s children might describe her as adventuresome, while her grandchildren could describe her as silly. She enjoys reading stories to them and creating different voices for the characters. Music making brings joy to Nancy. She was curious about the Sweet Potato Fries, went to one of their Friday afternoon sessions, and found her singing blended with the music they made.

In 1983, when Allen and Nancy moved to Ohio, the opportunity to purchase an 1857 farmhouse piqued their curiosity and led them to renovating the property which is now on the National Register of Historic Places. Where will their curiosity take them next?

Diana Stevens



PHOTOS BY BOB SUTER



Meet Nancy Pignone #128

“It was meant to be,” says Nancy when asked why she moved to Crosslands. “My husband would be happy that I’m here.”

The belief that one has to meet people and get out of one's comfort zone defines Nancy Pignone. It's hard to imagine this friendly, outgoing newcomer as having grown up in a small, tightly knit community of Portuguese Catholics on Cape Cod, where her grandfather had immigrated from the Azores as a young man.


A portrait of Nancy Pignone, an older woman with short, curly white hair, smiling warmly at the camera. She is wearing a dark top and a small blue earring. The background is solid black.

PHOTO BY BOB SUTER

This was a time when the flourishing fishing industry and attending all the events at the local high school defined their lives. Nancy's mother had a huge pot ready for the days when her dad would walk in with a large, very live lobster in each hand, and crabs, too.

The belief that




PHOTO BY BOB SUTER

The belief that one has to meet people and get out of one's comfort zone defines Nancy Pignone.

Nancy, oldest of five children, also fondly recalls the “Blessing of the Fleet,” the winters with lots of snow, and in warmer weather, crossing the sand dune at low tide where the family would picnic and play until time for high tide.

(Her father let the air out of the car tires so that it could be driven in sand!). Nancy's parents ran a motel for several years and one of her first jobs was as a "chambermaid" in the hotel.

Her world would open up as she took other jobs away from her Provincetown home, such as working for her congressman. Moving to Washington, DC became another “meant to be” moment, because here she met her husband-to-be at a friend-of-a-friend’s party.

Nancy took a job working for the Justice Department until her first child was born, then

stayed at home with three children for 19 years. When Nancy went back to work for the government, it was with the Food and Drug Administration until she retired. But the time she spent with the Justice Department is deeply ingrained because of world and national events, especially 1968, with its riots, assassinations, and the unrest over the US involvement in the Vietnam War.

With husband Larry, until his death, Nancy settled in Montgomery County, Maryland, where she lived for 55 years. Life was molded by their faith, family, and friends. Today, she looks forward to new friendships, continued fitness activities, finding a book club, spending time with grandchildren, and best of all, getting a passport for the first time (just in case).

Linda Helton



Jumble

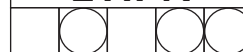
Unscramble the words; then use the circled letters to complete the sentence.

WEORP



"NO
RODENT—
SHALL
ESCAPE ME!"

ETIPN



MASHC



TKICSS



Answer here:



THE CISTERCIAN
BROTHER KEPT THE
MICE OUT OF THE
MONASTARY BECAUSE
HE WAS A...

JUMBLE BY STEVE SANDER

LAST MONTH: OBESE, CLAIM, ROCKET, INWARD. WRECK-REACTION.

Did You Know That...

- ...if you want to listen to the TV9 recording of today's events and menus, dial 484-770-5711?
- ...hummingbirds continued to visit Crosslanders' feeders and flowers well into September? Early May seems to be the best time to put feeders out to attract the hummers and enjoy their activity throughout the summer.
- ...the doors to the Center are no longer open 24/7? Check the Crosslands Door Access Schedule on the Crosslands website or hallway bulletin board for specific information.
- ...a library card for the new Kennett Library and Resource Center is free for all Chester County residents? Bring your driver's license or a piece of mail addressed to you at your current residence. A card will be issued to you on the spot.
- ...**NO** plastic bags should be put in the recycling bins? They should be placed in the plastic bag collection bin at the front of the Center.
- ...Crosslanders enjoy 90 gallons of ice cream a week?
- ...the Cartmel website has a map of Cartmel trails?
- ...the University of Delaware's Osher Lifelong Learning (OLLI) classes are held live at UD's Wilmington campus, route 52, a 15–20-minute drive from Crosslands, and/or on Zoom?
- ...the Sweet Potato Fries make music during a "fun-time sing-along" Fridays 3:00-5:00 pm in the William Penn Lounge (WPL) or Penny's Garden Lounge if the WPL is being used? Visitors are welcome to join in the fun.
- ...committees which change their Chair, Co-chair, or published list of members should notify Bunny Lawton, CRA's 2nd vice-president, so she can make sure the website is informed and can be kept up to date?
- ...the Lost & Found drawers at the end of the Crosslands cloak room are also a place to leave cards, pads, etc. you receive in the mail, for others to take and use?

- ...to make reservations for rooms in Ellerslie, the 1828 farmhouse built by Stephen Webb, that was renovated in the late 1970's for use as a guest house, contact the Front Desk Ambassador?
- ...in time for cold weather, the Needlers donated: 40 baby hats to Chester County Hospital; 30 hats to homeless shelters; four baby blankets and fifteen children's sweaters to Spanish Health Ministry?

Diana Stevens

The Showcase Committee Is Looking for Ideas



You walk by the Showcase on your way to the Café for lunch or dinner. Many have enjoyed the current showcase featuring "storytelling." The Showcase Committee needs people with ideas for upcoming showcase subjects, designers, and physical help setting up the displays.

Do you have a collection of something interesting that you would like people to see? Contact Debby Kern.

What's New at the Library



PHOTO BY STEVE SANDER

FICTION

Benedict, Marie.....	<i>Lady Clementine</i>
Enright, Anne.....	<i>The Wren, The Wren</i>
Glass, Ava.....	<i>The Traitor</i>
Hilderbrand, Elin.....	<i>Winter in Paradise</i>
Jackson, Jenny.....	<i>Pineapple Street</i>
Jiles, Paulette.....	<i>Chenneyville</i>
Kim, Angie.....	<i>Happiness Falls</i>
Mason, Daniel.....	<i>North Woods</i>
Swann, Leonie.....	<i>The Sunset Years of Agnes Sharp</i>

CD FICTION

Sparks, Nicholas.....	<i>The Best of Me</i>
Sparks, Nicholas.....	<i>The Guardian</i>

MYSTERY

Connolly, John.....	<i>The Land of Lost Things</i>
Cleeves, Ann.....	<i>The Raging Storm</i>
Jance, J. A.....	<i>Blessing of the Lost Girls</i>
Perry, Ann.....	<i>The Traitor Among Us</i>
Robb, J. D.....	<i>Payback in Death</i>
Seales, Julia.....	<i>A Most Agreeable Murder</i>

NONFICTION

Anderson, Cooper.....	<i>Astor: The Rise and Fall of an American Fortune</i>
Coren, Stanley.....	<i>The Pawprints of History</i>
Dodman, Nicholas H.....	<i>If Only They Could Speak</i>
Francis, Richard C.....	<i>Domesticated: Evolution in a Man-made World</i>
Hansen, J. R.....	<i>Completely Mad: Tom McClean John Fairfax, and the Epic Race to Row Solo Across the Atlantic</i>
Lepore, Jill.....	<i>The Name of War: King Phillip's War and the Origins of American Identity</i>

Rakowsky, Judy.....	<i>Jews in the Garden: A Holocaust Survivor, the Fate of His Family, and the Secret History of Poland in World War II</i>
Simon, Rachel.....	<i>Pickleball for All</i>
Vlahos, Hadley.....	<i>The In-Between: Unforgettable Encounters during Life's Final Moments</i>
Wolfthal, Diane.....	<i>Medieval Money, Merchants, and Morality*</i>

* Indicates Crosslands Author

BIOGRAPHY

Simmons, Ruth J.....	<i>Up Home</i>
----------------------	----------------

DVDS

<i>Glory</i>	1989
<i>The Good House</i>	2021
<i>Living</i>	2022
<i>Merrily We Live</i>	1938
<i>Murder, She Wrote Four-Movie Collection</i>	
<i>South by Southwest</i>	1997
<i>A Story to Die for</i>	2000
<i>The Last Free Man</i>	2001
<i>The Celtic Riddle</i>	2003
<i>Monarch of the Glen</i>	
<i>Series 1-7</i>	2003-2007
<i>Are You There, God? It's Me, Margaret</i>	2023
<i>Past Lives</i>	2023
<i>Empire of Light</i>	2022

DISPLAY TABLE

Pulitzer Prize Winning Fiction



AI GENERATED BY ADOBE FIREFLY

November 2023 Calendar

- Wed Nov 1** **Name Tag Day.**
Painting Studio. 10:00 am-noon.
 Arts & Crafts Rm.
- Thu Nov 2** **Birthday Celebration.** For those
 with November birthdays.
 5:30-7:00 pm. Dining Room Alcove.
Grief Support Group.
 10:00-11:00 am. Wyeth Rm.
- Fri Nov 3** **Worth Center Open House.**
 1:30-3:00 pm. See p. 10.
**Diversity, Equity, Inclusion and
 Belonging.** *Belonging: A Critical
 Piece of Diversity, Equity and
 Inclusion.* Dr. Carin Taylor. 7:30pm.
 WPR/Zoom/TV13. See p. 9.
- Sat Nov 4** **Movie.** *All The Way.* 7:15 pm .
 WPR,TV13. See p. 12.
- Mon Nov 6** **CRA Board Meeting.** 10:00 am.
 WPR/TV13. All are invited.
- Tue Nov 7** **Election Day.** In-person voting in
 the WPR. **VOTE YOUR VALUES.**
- Wed Nov 8** **Memory Screening.** 1:00-3:00 pm.
 See p. 11.
Forum. *NEO's: A Clear and Present
 Danger from Space.* John Conrad.
 7:30 pm. WPR/TV13. See p. 7.
- Thu Nov 9** **Shredding Event.** 10:00 am-noon.
 Outside the Center.
Movie. *Coco.* 7:15 pm. WPR/TV13.
 See p. 12.
- Sat Nov 11** **Special Program.** *Tunes We
 Treasure.* Jerry Daghir. 7:30 pm.
 WPR&L. see p. 10.
- Sun Nov 12** **Music.** Academy of Vocal Arts.
 3:00 pm. WPR/TV13. See p. 12.
- Mon Nov 13** **Health & Wise.** 11:00-noon. Zoom.
- Tue Nov 14** **Tuesday Edition.** *The Battle of
 Gettysburg.* Art Smith. 11:00 am.
 WPR/TV13. See p. 10.
**Essential Tremor/Peripheral
 Neuropathy Support Group.**
 2:00 pm. Conference Rm.
- Wed Nov 15** **Name Tag Day.**
Administration Dialog. 10:30-
 11:30 am. WPR/TV13/Zoom.
Spiritual Life. *Gratitude.* Lathie
 Gannon and Lowell McMullin.
 3:30 pm. WPR/TV13. See p. 11.
- Special Program.** *Artificial
 Intelligence (AI) and the Media.*
 Ralph Begleiter. 7:30 pm. WPR.
 See p. 8.
- Thu Nov 16** **Grief Support.** 10:00-11:00 am.
 Health Center Meeting Rm
Special Program. Safety Forum.
*Preventing Falls and Injuries for
 Active Lifestyles.* 1:00-2:00 pm.
 WPR/TV13.
Friends Worship. *Friends Home of
 Kennett Square.* Christine McDonald,
 Director. 4:00 pm. WPRTV13.
 See p. 8.
- Fri Nov 17** **Plant Sale Order Forms
 Deadline.** See p. 8.
Camera Club. *The Canadian High
 Arctic.* Leslie and Warren Gifford.
 7:30 pm. WPR/TV13. See p. 9.
- Sat Nov 18** **Energy Committee Reception for
 SSAFE Members.** 3:30-5:00 pm.
 WPL.
Movie. *Are You There God? It's Me,
 Margaret.* 7:15 pm. WPR/TV13.
 See p. 12.
- Sun Nov 19** **International Folk Dancing.**
 2:00-3:30 pm. Multipurpose Rm.
- Tue Nov 21** **CRA Concerns Session.**
 10:00 am. Music Rm. Air your
 concerns with two CRA Board
 members.
Forum. *Myths about Drugs and
 Prisons.* Keri Blakinger. 7:30 pm.
 WPR/Zoom/TV13. See p. 7.
- Thu Nov 23** **Thanksgiving.**
- Tue Nov 28** **KCC Ethics.** *The Medical Basis for
 CCRC Transition in Care.*
 Dr. Lawrence. 2:00 pm. WPR/Zoom/
 TV13.
Music. Charles Abramovic, piano.
 7:30 pm. WPR/TV13. See p. 12.



Venues, times, and other details
 may change. Please watch for
 announcements on the **Crosslands**
Website, bulletin board, and TV9.