

# CROSSLANDS CHRONICLE

APRIL 2019

Volume 46, Number 4

## THE “ROAM ALERT” SYSTEM AT CROSSLANDS

Several weeks ago, I witnessed a lot of confusion as I was leaving the dining room after dinner. About a dozen other people, including residents and visitors, were leaving at the same time. Suddenly, an alarm started sounding and the front doors of the Center locked. A couple of people started to try to force the doors open, but someone else shouted, “Don’t open those doors!” People didn’t know why this was happening or what to do to resolve the issue. After a minute or two of this confusion, the alarm was turned off by a staff person, the doors unlocked, and everything went back to normal. Almost unnoticed, a resident of Firbank was gently guided back to a Firbank neighborhood.



This scene may have been confusing and upsetting to some residents, but it was actually a part of the wonderful, caring, and respectful environment that we enjoy here at Crosslands. According to their abilities and interests, those who live in Firbank have access to and are free to participate in the activities of the community, most of which take place in Crosslands Center, which also includes the Firbank garden areas. Those members of our community who suffer from dementia are also included rather than being segregated from the community in a locked unit. Cathy Emig, Health Center Administrator, notes “This integrated environment enables us all to be enriched by one another.”

The scene that I described above demonstrated the “Roam Alert System” in action, helping to sustain the well-being and safety of residents. If a resident gets easily confused and cannot independently find his/her way to or from a specific location, an interdisciplinary team including family may decide that this resident needs to wear a “Roam Alert” bracelet. This decision is reviewed quarterly.

When a resident who is wearing a “Roam Alert” bracelet gets too close to an exit door and remains there for 15 seconds, the system sounds an alarm and locks the door so the resident cannot get lost by going outside of the Center. The beeping alarm will stop and the door will unlock when the resident walks away, or when a staff member arrives to escort the resident out of the area, after keying in a code to unlock the door.

### **What should you do if you encounter a locked door with an alarm sounding?**

- If you need to exit/enter the building, go to another door. **NEVER pry open a locked door.**
- Report the alarm to Firbank or any staff on duty. You can call extension 5622 or go to Firbank Central to report the alarm.
- Be patient. A staff member will come as quickly as possible to stop the alarm and unlock the door.
- If you are aware of a resident who may be setting off the alarm, gently guide him/her away from the exit door and enjoy the opportunity to be an escort back to Firbank.

This system is the result of a thoughtful and deliberate process to treat every resident with dignity and respect, allowing them the freedom to move around the Center as they wish. I believe that this is a major strength of our community, and I am grateful for this system.

*Elizabeth Rhoads*

## FROM THE CRA PRESIDENT

What is the Crosslands Residents Association (CRA)? What is it that we do?

In brief, we foster a sense of community by organizing social, cultural, and intellectual activities that enhance our lives. We do this through the actions of our Board and our committees. What factors make them successful? On April 1st, from 1 to 2 p.m., the Board is sponsoring a program, *The Energy and Harmony of Our Community ... and You? How Committees and Members Work at Their Best*, by Jane Mack, President & CEO of Friends Services for the Aging. Please read the in-depth description of the program in this Chronicle. At the morning CRA meeting, Jane will give us an update on the benefits Crosslands receives from the Friends Services for the Aging.

In addition, the Sunflower Shop will give us an update on their latest fashions, along with many other items they offer us.



We are such a special community. Let's build on our strengths.

*Sara Jane Withers*

## CONTRIBUTIONS TO THE CRA DUES DRIVE

The collection box is on the server opposite Patty Chapin's desk. **Please put it to use!**

## DID YOU KNOW THAT...

- Alice Bucher and Phyllis Wenner were prize winners in the 2019 Philadelphia Flower Show?
- wearing your Crosslands nametag on Nametag Days (the first and fifteenth of the month), as well as other days, is very helpful, especially for new residents as they work to connect with our community?
- "Locally grown" shiitake mushrooms may have started their lives growing on logs in China? Because they are harvested in the U.S., they meet the USDA's country-of-origin labeling requirement, but the loss of much of the shiitake mushroom log business is hurting Kennett Square mushroom growers.
- Seth Beaver, recent new father, is related to the Beaver for whom Penn State's Beaver Stadium is named?
- the ashitaba plant near the piano in Penny's Garden Lounge is reputed to be a medicinal herb, the leaves of which, when chewed, supposedly alleviate many ailments? Arrange with Florence Lim to learn more.
- as Jim Mulligan eases into retirement from teaching at the University of Delaware, he and Lois have spent more time in New York City, New England, and Canada?

*Diana Stevens*

## CROSSLANDS CHRONICLE

Published by and for the residents and administrators of Crosslands.  
P.O. Box 100  
Kennett Square, PA 19348

**Editor:** Larry Wood

**Managing Editor:** Dick Voldstad

**Editorial Staff:** Jean Barker, Julie Knobil, Betty Nathan, Elizabeth Rhoads, Hollis Scarborough, Diana Stevens

**Staff Artist:** Nicholas La Para

**Proofreaders:** Jane Andrews, Jean Barker, Selma Hayman, Betty Nathan, Charlie Reed, Elizabeth Rhoads, Hollis Scarborough, Sally Tweedie

**Distribution:** Dick Baxter, Ruth Trimble, Margaret Tsan



## MUSIC COMMITTEE

**The Wister Quartet****Nancy Bean, violin; Davyd Booth, violin****Pamela Fay, viola; Lloyd Smith, cello****Tues., April 9—Wm. Penn Rm.—7:30 p.m.**

Since its formation in 1987, the Wister Quartet has earned high praise from critics and audiences alike for its superb musicianship and memorable performances. Named to honor Frances Anne Wister, the founder of The Philadelphia Orchestra's Volunteer Committees, the members of the quartet have all had a long association with the Orchestra. In addition to concerts in Europe and China, The Wister Quartet performs widely in the Philadelphia region. They have recorded for Direct-to-Tape Records and their first CD was nominated for a Grammy Award. We are delighted to have them return to play a concert of Marcel Farango, Joseph Haydn and Antonin Dvorak's music for us.

**Kate Ransom, violin****Lawrence Stomberg, cello****Jennifer Nicole Campbell, piano****Tues., April 23—Wm. Penn Rm.—7:30 p.m.**

Three fine musicians will combine to play for us this evening. Kate Ransom, violinist, has appeared as a soloist or chamber musician throughout North America and Europe. She pursued post-graduate chamber music studies at the Juilliard School with Robert Mann and holds a master's degree in violin performance from Yale University. Kate serves on the faculty of the University of Delaware and is President of the Music School of Delaware. Lawrence Stomberg, cellist, enjoys a wide ranging career as soloist, orchestral and chamber musician and teacher. He received his bachelor's degree in music from Rice University and master's and doctor's degrees in musical arts from Stony Brook University. He also serves on the faculty of the University of Delaware. Jennifer Nicole Campbell, pianist, returns to Crosslands having previously performed as soloist and in a piano duo. She holds bachelor's and master's degrees from the Peabody Conservatory of Johns Hopkins University. She has performed with several local orchestras and teaches at Cecil College and the Music School of Delaware.

*Tricia Reed*

## LIGHT &amp; LIVELY

**Linda Kenyon as Julia Child****Sat., April 13—Wm. Penn Rm.—7:30 p.m.**

Linda Kenyon does a superb impersonation of Julia Child, the American cook, author, and television personality who introduced French cuisine and cooking techniques to America.



Linda has had an impressive show business career, appearing, for example, as the Duchess of York in the Virginia Shakespeare Company's production of *Richard III*. She has worked at the Washington Stage Guild, the Source Theatre and at the Maryland Renaissance Festival. Her recorded voice can be heard at the Postal Museum, the Civil Rights Museum in Memphis and at the United States Holocaust Memorial Museum. She received very good press after performing her impersonation of Eleanor Roosevelt here at Crosslands.

As Julia Child, she says "Bon Appétit."

*Manya Bean***SING ALONG WITH SARAH LEE****Musical Prelude to Earth Week****Thurs., April 18—Penny's Garden Lounge  
7:15 p.m.**

Our songs will echo the Spring Equinox program last March, musically and spiritually celebrating nature, family and our country.

*Sarah Lee Houston*



## FORUM COMMITTEE

### ***Mt. Cuba Center, From Inspiration to Conservation***

**Speaker: Jeff Downing, Executive Director**  
**Tues., April 2—Wm. Penn Rm.—7:30 p.m.**

Mount Cuba Center, in Hockessin, DE, was the vision of Mr. & Mrs. Lammot du Pont Copeland, who wanted to create a place where people could learn to appreciate native plants, and to learn how they could enrich their lives and become conservators who support our natural habitats. Its woodland gardens produce some of the most spectacular displays of wildflowers in the mid-Atlantic region.

Jeff Downing will share with us the history of this unique non-profit botanical garden and its development, providing a visual tour of a remarkable nearby treasure. Mt. Cuba is a teaching center as well as a place to visit, playing an important part in the preservation of native plants and natural lands for future generations. We hope this program will encourage people to visit it in the next weeks as spring arrives in the Delaware valley.

*Mary Ann Wagner*

### ***The Human Microbiome in Health and Disease***

**Tues., April 16—Wm. Penn Rm.—7:30 p.m.**

**Speaker: Carolyn Gibson,**  
**Professor Emeritus**  
**Dept. of Anatomy and Cell Biology,**  
**U of PA School of Dental Medicine**  
**Kendal Resident**

“Our bodies are inhabited by trillions of microorganisms”. This statement from the NIH (National Institutes of Health) led to studies of the census of bacteria that live on skin, mouth, and gut, and whether they are helpful or detrimental. Numbers of various gut bacteria can change according to diet or antibiotic treatment, and changes can be associated with disease or the return to health. The bacterial community living in the gut communicates with the body in ways that are beginning to be understood.

Come learn more about what may- or may- not be living inside of you!

*Cathy Elder*

## CROSSLANDS RESIDENTS ASSOCIATION

### ***The Energy and Harmony of Our Community ~ And You?***

***How Committees And Members Work At Their Best***

**Speaker: Jane Mack, President and CEO,**  
**Friends Services for the Aging (FSA)**  
**Mon., April 1—Wm. Penn Rm.—1:00 p.m.**

Don't miss attending this one-hour workshop that will help you sharpen your skills as you participate in the committees that make Crosslands tick.

At the Monday, April 1<sup>st</sup> CRA Board meeting, Jane Mack will give residents an update on the benefits Crosslands receives from the FSA. One of those is the information workshop she will lead that afternoon on how committees and members can work at their best. The workshop will focus on best practices for committees, their members and leaders, and will include handouts and time for questions.

*Diana Stevens*

## GREAT DECISIONS

### ***The Rise of Populism in Europe***

**Moderator: Brigitte Alexander**  
**Mon., April 29—Wm. Penn Room—9:45 a.m.**



Mass migration, and the problems associated with it, have directly abetted the rise of populist parties in Europe. Opposition to immigration was the prime driver of support for Brexit, it brought a far-right party to the German Bundestag for the first time since the 1950s, and propelled Marine Le Pen to win a third of the vote in the French presidential election. In addition to calling for stronger borders, however, these parties are invariably illiberal, anti-American, and anti-NATO, making their rise a matter of serious concern for the national security interests of the United States. Brigitte will make all things clear.

*Chuck Gosselink*

### CAMERA CLUB

***Elements: Earth, Water, Air, and Fire***  
**Presenters: Cindy Arrouet, Manya Bean, Bill Hauser, Lowell McMullin, Nancy Pereira, Paulding Phelps, Paul Stevens**  
**Fri., April 12—Wm. Penn Rm.—7:30 p.m.**

What the ancients called the “elements”, earth, water, air, and fire, will be the subjects of tonight’s program offered by the Crosslands Camera Club. The photographers will show images related to one or several of these elements, some with commentary and some with musical accompaniment.

Each of these elements is rich with possibilities: Water can be restorative as when drinking or bathing, mystical as mist, or hazardous as snow or ice on roads; Fire can warm or burn us, illuminate an evening meal, and sear a tuna steak; Earth can rock us and flatten our dwellings, nurture our flowers and vegetables, and give us majestic landscapes; and Air, nearly impossible to photograph directly, allows us to breathe, sail, fan ourselves, and experience the sky in all of its glory.

Please join us for a varied and engaging program!

*Bob Suter*

### CROSSLANDS PLAYERS

***Come Into the Garden, Maud***  
**Fri., April 19—Wm. Penn Rm.—7:30 p.m.**  
**Sat., April 20—Wm. Penn Rm.—2:30 p.m.**

The Crosslands Players are pleased to present *Come Into the Garden, Maud*, by Noel Coward. It is the final play of the trilogy *Suite in Three Keys*, each play of which is set in the same Swiss hotel suite. It was written in 1966, the year he died, and was his last work for the stage. You can't afford to miss this comedy, a combination of cheek and chic, pose and poise.



*Jack Yeatman*

### IN THE GALLERY

The Virginia Schofield art exhibit continues through April and comes down on May 1. Virginia explains that all are oil paintings done either on canvas or board. Local scenes have inspired her images.

*Nancy Geary Pereira*

### WELCOMING COMMITTEE

#### ***New Residents Reception***

**Thurs., April 11—Wm. Penn Room and Lounge—3:30 to 5:30 p.m.**



Come and meet our newest residents. The Welcoming Committee is hosting a reception for new and not-new to mingle.

Light refreshments will be served. Please note the time, a departure from previous years' events. New residents are expected to arrive at 3:30; others at 4:30.

*Nancy Crowe*

### FRIENDS WORSHIP GROUP

***Quaker Education: Learning and Light***  
**Sun., April 28—George Fox Room**  
**3:30 p.m.**

**Speaker: Brian Fahey, Head of School, West Chester Friends**

The Friends Worship Group invites residents from Crosslands and Kendal to join us in welcoming Brian Fahey for a presentation/discussion on Friends education. Brian especially invites former faculty and alumni to attend. All are welcome.

*Carol Ann Baker*

## 2019 EARTH WEEK EVENTS

- Earth Week activities in the last week\* of April include the following:
- An open House in the Native Plant Preserve
- "Down the Garden Path", a short walk for Audland and Firbank residents led by Jane Roberts and Jennifer Allcock, Tuesday, April 23, at 4:00 p.m.
- A hike led by new Trails Chairman Terry Borton, Wednesday, April 24 at 8:30 a.m.
- A program about trees by Casey Groff, **at Kendal**, for residents in the Adopt-A-Tree program, 10:00 a.m., Thursday, April 25 (bus will leave at 9:30 a.m. and return before noon).
- An Earth Week reception in the Wm. Penn Rm., 4:30 to 6:00 p.m. on April 25.
- Planting of Penn Treaty Elms, Friday, April 26 at 1:00 p.m.
- Kendal Crosslands Arboretum Annual Meeting in the Wm. Penn Room at 7:30 pm on Arbor Day, Friday April 26. Horticulturist and educator Dan Benarcik will present a program titled "Chanticleer: The Art of Gardening."

\*Watch for exact dates, times, locations and sign-up sheets on the bulletin board the week prior. Mark your calendars and join us as we celebrate what must surely be spring at the end of April!

*Jennifer Allcock*



## NATURE CONSERVANCY HIKES

### Take the Bus to a Guided Introductory Hike on KCC Trails, Safe and Easy

Never been on the Crosslands trails? Now it's really easy. And they're spectacular.

A bus will leave from the Center to take you down to the trail head by the gardens, and bring you back up the hill at the hike's end, visit a few other trail heads, and then take you to your apartment. What could be more luxurious?

From the gardens trail head you'll take a 1-hour introductory walk at a leisurely pace on EASY trails (same route as last month). Learn how to keep from getting lost, how to prevent falls, how to beat the ticks, which trails are tough. Plus, of course, see our spectacular woods, our beautiful babbling brook, our lovely pond, and who knows what kind of wildlife. There are benches on the trail loop to stop at if you don't want to walk the whole hour.

Wear long pants, long-sleeved shirt, long socks, old shoes. Tick spray provided. Bring a map and walking stick if you have them. Bus leaves the Center at 8:30 sharp, Wednesday April 24, rain or shine. Sign up on the Bulletin Board. If you can't make it, or don't like the weather, come next month on May 20. Call me with questions

*Terry Borton  
Trail Chair*

### Explore Off-Campus Hiking Trails

Learn about some of the beautiful hiking areas near us. Guided trips leave from the Center at 8:30 a.m. sharp. Bring your car if you have one. Sign up at the Nature Conservancy Bulletin Board.

- Wed., April 3. The Stroud Preserve. Drive 15 min., hike for 2 hours. <https://natlands.org/stroud-preserve/>
- Wed., May 1, The White Clay Preserve. Drive 1/2 hour, walk for 1.5 to 2 hours. <https://www.dcnr.pa.gov/StateParks/FindAPark/WhiteClayCreekPreserve/Pages/default.aspx>
- Wed. June 5, Brandywine Laurel Preserve. Drive 15 min., walk for 1.5 to 2 hours. <https://www.brandywine.org/conservancy/preserves/laurels-preserve>

Call me if you have questions.

*Dan Mitchell*

## MOVIE COMMITTEE

### ***The Pink Panther Strikes Again***

**Sat., April 6—Wm. Penn Rm.—7:15 p.m.**

Inspector Clouseau's boss, Charles Dreyfus, hospitalized in a mental institution, manages to escape and launches an elaborate plan to get rid of Clouseau once and for all. Dreyfus is jealous of Inspector Clouseau's assignment to find the stolen **Pink Panther** diamond.

Sure to provide lots of zany laughs! Run time: 143 minutes.

*Sharon Sundial*

### **Documentary Film**

#### ***A Plastic Ocean***

**Thurs., April 18—Wm. Penn Rm.—7:15 p.m.**

*A Plastic Ocean* begins when journalist Craig Leeson, searching for an elusive blue whale, discovers plastic waste in what should be pristine ocean. In this adventure film, Craig teams up with free diver Tanya Streeter and an international team of scientists and researchers in traveling to twenty locations around the world for the next four years, exploring the fragile state of our oceans and uncovering alarming truths about plastic pollution. They discover solutions that can be put into immediate practice.

We can all take steps to help reduce plastic pollution in our oceans and all around us. Specific action recommendations will be provided. Run Time: 102 minutes.

*Sharon Sundial*

### ***The Lavender Hill Mob***

**Sat., April 20—Wm. Penn Rm.—7:15 p.m.**

Alec Guinness stars as Lionel Holland, a fussy, mild-mannered bank clerk regarded by his superiors as conscientious but unimaginative. Holland has hatched a scheme to hijack one of the shipments of gold bullion that he is responsible for transferring between London banks. When opportunity, in the person of a new fellow lodger, and necessity, in the form of an unexpected and unwanted promotion, force his hand, Holland sets out to recruit a gang. With Stanley Holloway and Edie Martin (and a cameo appearance by Audrey Hepburn before she became a star). Run time: 108 minutes.

*Ron Broude*

## KENDAL~CROSSLANDS ARBORETUM

### ***Chanticleer: The Art of Gardening***

**Speaker: Dan Benarcik, Horticulturalist**

**Fri., April 26—Wm. Penn Rm.—7:30 p.m.**

Arbor Day will mark the Annual Meeting of the Kendal Crosslands Arboretum (KCA). Dan Benarcik, whose topic will be *Chanticleer: The Art of Gardening*, is an educator who has travelled widely. He is an engaging speaker, so do come hear him describe The Art of Gardening. For those who have not visited this spectacular garden in Wayne, PA, here is a chance to enjoy a guided tour by one of those who created it.

*Jennifer Allcock*

*KCA Joint Committee Chairperson*

### SUNFLOWER SHOP

The newest artist to bring his work to the Sunflower Shop on note cards is Martin May. Marty attended the Pennsylvania Academy of the Fine Arts and the John Hussian School of Art. He retired from a career in commercial graphic art and now concentrates on his own artistic pursuits. He specializes in finely detailed pen and ink drawings of wildlife and historic buildings and structures, as well as pet portraits and renderings of private homes and commercial buildings. He inserts a touch of humor into his art when he can.

Ten cards are packaged and displayed on a hanging fixture in our shop for \$8 per package.

Stop by and make a choice from many designs, for your own use, as well as gifts for friends or family.

*Nancy Crowe*

## RESIDENT STATISTICS

### Transfers

Blair Both	Firbank 606
Hoshen "Dick" Lu	Firbank 702
Bertha May Nicholson	Audland 500
Charles Reed	Audland 501

### In Memoriam

Nancy Southworth	February 20, 2019
Harry Milliman	February 21, 2019
Elsa Rhoads	March 3, 2019
Gerard Smith	March 3, 2019
Robert "Bob" Crowe	March 15, 2019

## WELCOME NEW RESIDENT

**Nancy "Nan" Naeve**  
January 2019

**Apt #38**



Gregarious is the word Nan used to describe her father. Anyone who has met Nan since she moved to Crosslands in January, or to Cartmel, 26 1/2 years ago, might use the same word to describe her. Nan has the innate ability to engage everyone she meets in conversation on a wide range of topics, many of which mirror her interests: museums (art and history); literature (belongs to a book group); theater (attends plays at three different theaters); music (classical, opera, and even

the ol' favorites of the 50's, her college and new bride period); and travel (Europe, especially England, Russia, China, Israel, India); and volunteerism (Christ Church Green Show and board of the original Admiral in Chicago).

Nan is a risk taker. She studied pharmacy at a time when there were few female pharmacists, completing her B.S. and M.S. in pharmacy at the University of Colorado. When Nan downsized, she discovered two bottles of Alsatian wine she and her late husband Milo (Mike) had purchased at an Alsatian vineyard 15 years ago. Without hesitation, she brought them to dinner at Crosslands, confident that if the wine had gone bad, she would know quickly and had a more recent vintage as a back-up. The wine was fine—a risk worth taking!

Downsizing for the Crosslands move was a monumental task which Nan undertook with attention to detail and organizational savvy. Prior to Mike's death in 2009, he and Nan planned what would happen to their antique furniture, folk-art collection, and the 105 boxes of Mike's papers. Nan's 55-year marriage to Mike, a noted American art historian, curator and museum director, was a perfect match for a gregarious, risk taking woman.

*Diana Stevens*

## BOOK REVIEW

*Killing Commendatore*  
by Haruki Murakami and  
*Anniversaries* by Uwe Johnson

Reviewer: Larry Flood

**Mon., April 18—Wm. Penn Rm.—11:00 a.m.**

Two long novels, one Japanese the other German, recently translated into English. They provide reading pleasures and insights into language, culture and history.

And they also remind the reader of the essential role of translators.

*Larry Flood*

## TRANSPORTATION TIPS

(February 2019 interview with Teresa Price, KCC Transportation Supervisor, Part I)

Presently, KCC employs four full-time drivers and three on-call drivers. To become a KCC bus driver, applicants must have a commercial driver's license with a passenger carrying endorsement, as required by Pennsylvania state code. There are six to seven buses working daily and Teresa would like to see another bus added to the fleet. Sometimes problems arise when several long-distance trips (Philadelphia, Wilmington, Exton, etc.) are scheduled for the same day. Teresa's day begins at 7:00 a.m. or earlier and ends around 4:00 p.m., although she is sometimes called after hours to pick up a resident at a hospital.

Teresa loves what she is doing.

*Pat Koedding*

## PRIMARY ELECTION NEWS PENNSBURY 453 N1

The primary election will be held on Tuesday, May 21 from 7:00 am until 8:00 pm.

All new residents must register to vote in this precinct by Monday, April 22. Forms are available at the bulletin board area or on-line.

If you wish to change your party affiliation, a new registration form must be filled out and returned by Monday, April 22.

Absentee ballots must be requested by Tuesday, May 14.

Reminder: This is a primary. Only members of the parties that have candidates on their slates may vote in that party's primary. Individuals with no party affiliation do not vote in this election.

*Bonnie Marcus*  
*Judge of Elections*



## TECHNOLOGY SCAMS

### Don't Be a Victim—BEWARE!!!

Today it is easy to think that many people are trying to help us. However, areas to be very cautious about are phone calls and emails when someone is asking YOU for MONEY! Be careful of any SCAMS. Here are some recent examples...

- An E-mail or phone call from the IRS that asks you to "wire" money to avoid a penalty. Don't do it. The IRS will only contact you via mail!
- Someone calls to say there is a "virus" on your computer and asks for credit card information. Don't give it.
- Phone call or E-mail from someone who says they have met your grandchild who is stuck in a certain country or in jail- and needs money. Don't give credit card info. Call your family to check on this.
- E-mail, or a pop-up message on the computer, or phone call that says you have won a prize and asks you to pay a fee to receive your prize. Don't go for this.
- Technology support company offers you a refund and asks for your credit card information. Don't.
- Never say "yes" on the phone to any questions, unless you know the questioner. There is risk that someone could be tape recording your "yes" to use it in a fraudulent way.
- Never give out your bank account number. There have been cases of someone claiming to be calling from a bank and saying she needs to verify your account numbers because of an issue or overdraft on your account. This doesn't happen. Banks communicate by mail.
- Don't go out and buy "Walmart or Target" or any "gift cards" and then give the person those numbers over the telephone to pay for a computer repair. Gift cards are like cash and can be untraceable.

These are just a few examples of fraud. When in doubt, do nothing and **offer no personal information**. Ask for their name and phone number; you can report this to the Police or State Attorney.

What to do if this happens:

- Let a reliable person in your life know that

this has been an issue.

- Call the local POLICE office.
- Call the PA Attorney General Office—Senior Protection: 866-623-2137 to report any scam attempts.
- Call the Chester County Dept. of Aging: 610-344-6350 for further information.

For more information go to: <https://www.usa.gov/stop-scams-frauds>  
[www.attorneygeneral.gov](http://www.attorneygeneral.gov)

*Claudia Greenholt*  
*Social Services Department*  
*(610) 388-3044*

### SAFETY COMMITTEE NEWS

1. There are SEVEN (7) red emergency phones in the Center ready for use 24 hours/day! One is in the Dining Room, to your right as you enter; one to the left of the doors outside the dining room; one in the Audland Dining Room to your left as you enter; one across the hall from the Café to the right of the coat rack; one in the William Penn Room to the right of the AV alcove. Downstairs, there are two, one across the hall from the elevator to your right, on the small wall at right angles to the Woodshop exit door; one at the end of the hall outside the staff room.
2. To use one of these red phones, simply lift the receiver. You will be automatically connected to Firbank.
3. All fire extinguishers in the Center have a 24-hour light shining above or near them.
4. If you miss the bus that leaves the Center after an evening event, you can still get a ride home by pressing the red button to the right of the front door and waiting for the bus.

*Betty Nathan*

### CRA CONCERNS SESSION

**Tuesday, April 16**

**In the Music Rm.**

**10:00 - 11:00 a.m.**

## LEARNING ALLY

[Ed. Note: This is the second in a series of articles on community-oriented activities outside Crosslands that might interest or appeal to our residents]

Bonnie Marcus wants you! No, she is not wearing a stove-pipe hat and red, white and blue clothing, and World Wars I and II are now, thankfully, long over, but she is seriously interested in getting others involved in her outside activity: reading and dictating books for a company called Learning Ally (LA for short).

LA started after World War II, and was originally designed to help veterans with learning limitations who wanted to take advantage of the GI Bill and educate themselves for the new opportunities which were then opening up. In 1948, a woman named Anne T. McDonald envisioned a service to assist military personnel who had lost their sight in combat. She led the New York Public Library's Women's Auxiliary to record text books on vinyl phonograph discs, and the organization Recording For the Blind was born. The organization found itself reaching out beyond the blind to dyslexic students and others with learning disabilities, and eventually changed its name and mission to reflect the new focus. Learning Ally was born.

In 2003, Bonnie was working in King of Prussia, and saw a sign asking for people to help LA. She visited their studios, liked what she saw, and signed on as a volunteer. She has been at it ever since.

In those early days, it was necessary to go to a studio to record books. Technology has since stepped in and made volunteering considerably easier; one can record virtually, i.e. in one's home (as Bonnie does), as long as one has the proper earphones and microphone and the necessary hookup to the LA website. Apparently, you have to buy your own equipment, but Bonnie says it's not expensive. I watched her demonstrate what she does, and it looks like fun. A picture formed in my mind of a dispatcher for a trucking company sending out messages to all the drivers, except that I don't think she says "10-4, good buddy" at the end.

There is a website that explains this better than I can: [learningally.org](http://learningally.org). A reader does have to learn how to read in accordance with LA's protocols. Bonnie herself is qualified to be a tutor helping to break in new readers, who have to learn the "conventions" applicable to the different kinds of reading for the blind, dyslexic students, and the myriad types of learning disabilities that LA services.

And this is no mom-and-pop organization. The day I went to interview Bonnie, the website was proudly advertising that 375,000 students were using the program, and that 62,000 educators from 16,000 schools were introducing students with reading disabilities to the thousands of books that LA has in its catalogue, available for those who need them.

Larry Wood

## SO YOU THINK YOU KNOW CROSSLANDS...?



Photos by Paul Stevens



Photo by Lowell McMullin

### Did you know where this is?

It's the decoration on the seat of the antique bench opposite the Sunflower Shop. Judy Bongiovanni and Alice Bucher spotted it and no one else did!

### Do you know where this is?

Send your answer to

**[XLChronicle2@gmail.com](mailto:XLChronicle2@gmail.com)**

or leave it in the *Chronicle* open mailbox. Please include your name and apartment number on your entry.

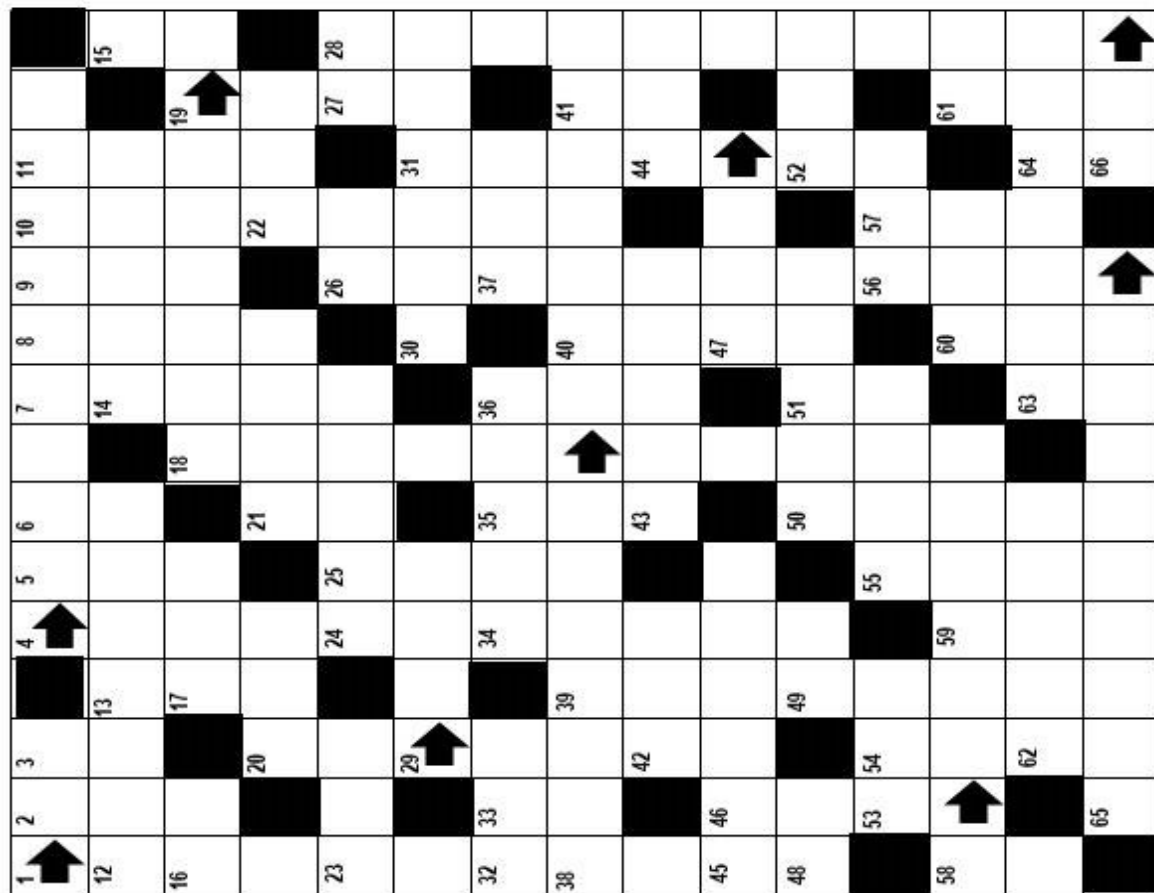
## CROSSLANDS CROSSWORD #34: THE RIGHT STUFF

## ACROSS

- 1 \_\_\_ time (not late)  
 4 "Even a broken clock is \_\_\_."  
 12 Pertaining to blood  
 14 Command or decree  
 16 Word before *hoc* or *nauseam*  
 17 \_\_\_ de plume  
 18 Red-handed; in the act of committing a crime or error.  
 20 Higher education institution in an eastern province of Canada (abbr.)  
 21 Fishing reels attach to them.  
 22 Insect that can lift 20 times its own weight  
 23 Quick swim or immersion  
 24 Makes changes to writing or video  
 26 Ol' Blue Eyes (inits.)  
 27 Best \_\_\_ both worlds  
 29 "There is no \_\_\_ to do a wrong thing."  
 30 Dale Earnhardt, Roger Penske, and Jeff Gordon are in its Hall of Fame.  
 32 A barrier to hold back water  
 34 Evaluates, assigns scores to  
 37 Highest-ranking administrator (abbr.)  
 38 This MacArthur Fellow founded the Children's Defense Fund.  
 42 Blood clotting test (abbr.)  
 43 Klempner, and von Bismarck,  
 44 Wapiti; member of the BPOE  
 45 Don't just \_\_\_ a few crumbs!  
 47 Look! \_\_\_ in front of your eyes!  
 48 Home of the Owls in Phila. (abbr.)  
 49 "The Wasteland" poet, \_\_\_ Eliot (inits.)  
 50 Speckled or dappled (horse or bean)  
 52 Not feeling well  
 53 Mini-stroke (abbr.)  
 55 "Claire de \_\_\_" (Debussy piece)  
 56 Sunbather's goal  
 58 \_\_\_ School, where Orville taught from 1910-1916.  
 60 Advanced academic degree (abbr.)  
 61 Belonging to me
- 62 Tilt, pitch, or skew  
 63 Skin color when badly sunburned.  
 65 Ponderosa resident on the "Bonanza" TV show  
 66 Ideal future husband; perfect guy

## DOWN

- 1 It's worn on the left hand of most baseball players.  
 2 It contains 600,000 words, and antonyms for many.  
 3 Its state seal portrays a cactus. (abbr.)  
 4 The 2<sup>nd</sup> Amendment guarantees the \_\_\_\_\_.  
 5 Kaine, Conway, or Tebow  
 6 Comedian/actor, \_\_\_ Fields (inits.)  
 7 Female college students, informally  
 8 Epochs, time spans, eons  
 9 Opposite of subtract  
 10 Remove the tops of corn plants to prevent self-pollination  
 11 Elvis Presley's middle name  
 13 Landers, Sothorn, or Coulter  
 15 Afterthought to a letter (abbr.)  
 18 Acclaimed 1989 film by Spike Lee  
 19 The accused has a \_\_\_ fair and speedy trial.  
 20 In these machines, you can stand while getting scanned.  
 21 New England's "Ocean State"  
 25 Actress/singer, \_\_\_ Cannon  
 26 What Abe Lincoln does on a penny  
 28 Architect of "Falling Water"  
 31 Welcoming message on a door sign  
 33 Small battery size  
 35 Square root of four  
 36 Collection, group, or array  
 39 Puts in place (e.g., a TV, computer program, or high official)  
 40 "Just \_\_\_" (Nike slogan)  
 41 Symbol for the metal in beer cans  
 46 Completely, altogether, absolutely  
 50 \_\_\_ Del Este, "the St. Tropez of Uruguay"



- 51 Opposite of SW  
 54 That being the case  
 55 The \_\_\_, home field of the Eagles  
 57 Popular home security service  
 58 You and I, together  
 59 Slangy enthusiastic affirmative reply  
 60 Church seating  
 61 Mal de \_\_\_ (seasickness)  
 63 Library in Kennett Square bore his name (inits.)  
 64 It comes after POWDER or REC in real estate listings

by Hollis Scarborough

## ABOUT STAFF MEMBERS

### Martha Stevens

You have probably noticed the whimsical pairing of white birch logs and pussy willow branches in the stone urns flanking our Center's entrance portico. These and other unusual pairings of color and shapes in the common gardens were our introduction to "new" staff member, Martha Stephens. She joined Casey Groff's Grounds staff in November of 2017 as Horticulturalist and Naturalist.

Martha came to us from the Delaware Center for Horticulture, where she oversaw and led the maintenance of more than 40 public landscapes, from sidewalk strips to public gardens, in the City of Wilmington. She also trained and supervised workers in a rehabilitation program in gardening sponsored by the Center. She worked as Fine Gardening Supervisor and Head Horticulturalist for Terrain At Styer's, worked as a designer for an upscale florist, volunteered at Longwood Gardens, and had her own garden design business.

She received her BS degree in Horticulture from Temple University and a Certificate in Environmental Sustainability (Martha's most recent career interest) from Longwood Gardens. She also loves animals, and, as a girl, worked in stables. But her first choice of career was fashion. She attended Sweetbriar College where she earned her degree in Fashion/Management, with a minor in Spanish, and then met her husband-to-be at her hometown church in Wayne, PA. She worked at first in the lingerie business, but her contacts with department stores led her to feel that they needed help in the art of display, particularly in jewelry departments, so she became an independent merchandiser specializing in jewelry displays.

When she became a mother, she gave up formal employment. She discovered her interest in gardening was growing along with her plants. This led to helping her friends and neighbors to design and work their gardens. When her oldest daughter entered college, she returned to school herself, and pursued her horticultural degree at

Temple.

Martha's three children and one grandchild are her greatest interest. Others include cooking, reading, and playing the classical flute in various groups including a flute quintet. She is also fond of outdoor activities such as skiing and biking, and her miniature dachshund Chase is another strong and important family character.

Martha loves our varied campus, and we hope she finds fulfillment here for her many talents.

*Betty Nathan*

### Answers to Crosslands Crossword #34

**ACROSS:** 1 right on, 4 right twice a day, 12 hematic, 14 order, 16 ad, 17 nom, 18 dead to rights, 20 UNB (New Brunswick) 21 rods, 22 ant, 23 dip, 24 edits, 26 F(rank) S(inatra), 27 of, 29 right way, 30 NASCAR, 32 dam, 34 rates, 37 CEO, 38 Marian Wright Edelman, 42 INR, 43 Ottos, 44 elk, 45 toss me, 47 it's right, 48 T(emple) U., 49 T.S., 50 pinto, 52 ill, 53 TIA, 55 Lune, 56 tan, 58 Wright Flying, 60 Ph.D., 61 my, 62 slant, 63 beet red, 65 Hoss Cartwright, 66 Mr. Right.

**DOWN:** 1 right-handed mitt, 2 OED, 3 NM, 4 right to bear arms, 5 Tim, 6 W.C., 7 coeds, 8 eras, 9 add, 10 detassel, 11 Aron, 13 Ann, 15 P.S., 18 Do the Right Thing, 19 right to a, 20 Upright MRIs, 21 RI, 25 Dyan, 26 faces to the right, 28 Frank Lloyd Wright, 31 Come right in, 33 AA, 35 two, 36 set, 39 installs, 40 do it, 41 Al, 46 outright, 50 Punta, 51 NE, 54 if so, 55 Linc, 57 ADT, 58 we, 59 yas, 60 pew, 61 mer, 63 B(ayard) T(aylor), 64 RM.

**NEXT SHOWCASE:**  
April 9 – May 13



**TURQUOISE & CRYSTAL**

Crystal and Turquoise Objects, and  
Anything Aqua, Teal or Turquoise in Color





## NEW IN CROSSLANDS LIBRARY

**Fiction**

Akunin, Boris – *The Coronation*  
 Bowen, Rhys – *The Victory Garden*  
 de Shalit, Jonathan – *A Spy in Exile*  
 Deveraux, Jude – *A Justified Murder*  
 Dray, Stephanie & Laura Kamoie – *My Dear Hamilton: A Novel of Elizabeth Schuyler Hamilton*

David Ebershoff – *The 19<sup>th</sup> Wife*  
 Kinsella, Sophie – *I Owe You One*  
 Morante, Elsa – *Arturo's Island*  
 Quinn, Kate – *The Huntress*  
 Rogan, Charlotte – *The Lifeboat*  
 Sullivan, Matthew – *Midnight at the Bright Ideas Bookstore*

Swados, Elizabeth – *Walking the Dog*  
 Woods, Stuart – *A Delicate Touch*

**Audio Fiction**

Kingsolver, Barbara – *The Bean Trees*

**Mystery**

Bradley, Alan – *The Golden Tresses of the Dead*  
 Camilleri, Andrea – *The Overnight Kidnapper*  
 Finch, Charles – *The Vanishing Man*  
 Harper, Jane – *The Lost Man*  
 Kellerman, Jonathan – *The Wedding Guest*  
 Kepler, Lars – *Stalker*  
 Patterson, James – *Liar Liar*  
 Robb, J.D. – *Connections in Death*  
 Robinson, Peter – *Careless Love*  
 Charles Todd, — *The Black Ascot*

**Biography**

Roberts, Andrew – *Churchill: Walking with Destiny*

**Nonfiction**

Huckelbridge, Dane – *No Beast So Fierce: The Terrifying True Story of the Champawat Tiger, the Deadliest Animal in History*  
 Land, Stephanie – *Maid: Hard Work, Low Pay, and a Mother's Will to Survive*  
 Yip-Williams, Julie – *The Unwinding of the Miracle: A Memoir of Life, Death, and Everything that Comes After*

**VIDEOS**

**Can You Ever Forgive Me** – The film tells the story of Lee Israel, an author of biographies of the rich and famous who, struck by writer's block and unsaleable writing, resorts to fraud to stay afloat financially. Rotten Tomatoes 98/82

**A Star Is Born** - A remake of the 1937, 1954 and 1976 versions of this story, this time starring Lady Gaga and Bradley Cooper, both nominated for Academy Awards for their performances. Rotten Tomatoes 89/80.

**The Wife** - Glen Close stars in an Oscar nominated performance telling the story of a marriage. Rotten Tomatoes 85/76

**A Private War** – The film tells the story of Marie Colvin one of the most celebrated war correspondents of our time, in a disturbing and violent depiction of the Syrian conflict. Rotten Tomatoes 89/65.

**Donations:**

**The West Wing** - Acclaimed TV series; seasons 1-7

**NEED A RIDE HOME AT NIGHT AFTER A  
CONCERT, FORUM OR OTHER EVENING  
EVENT?**

Push the **BUTTON** to the right of the main door and a bus will be dispatched to the Center.

**NAME TAGS**

The first and the fifteenth are 'Name Tag' days. Since many of us have problems remembering names and new residents are trying to learn our names, why not wear your name tag every day!

## Coming Events



### Mon., April 1. NAME TAG DAY

**Mon., April 1. Crosslands Residents Association Board Meeting.** Wm. Penn Rm., 10:00 a.m. All residents are welcome.

**Mon., April 1. Friends Services for the Aging. *The Energy and Harmony of Our Community ~ And You?*** Speaker: Jane Mack, CEO. Wm. Penn Rm., 1:00 p.m.

**Tues., April 2. Forum Committee. *The History and Development of Mount Cuba Center.*** Speaker: Jeff Downing. Wm. Penn Rm., 7:30 p.m.

**Wed., April 3. Nature Conservancy Hike.** The Stroud Preserve. Meet at Center, 8:30 a.m.

**Sat., April 6. Movie. *The Pink Panther Strikes Again.*** Wm. Penn Rm., 7:15 p.m.

**Mon., April 8. Low Vision Support Group.** Health Center Meeting Rm., 10:00 a.m.

**Tues., April 9. Caregivers' Support Group.** Meditation Rm., 10:00 a.m.

**Tues., April 9. Music Committee. *Wister Quartet.*** Wm. Penn Rm., 7:30 p.m.

**Thurs., April 11. Welcoming Committee.** New Residents Reception. Wm. Penn Rm. and Lounge, 4:30 to 5:30 p.m. (except 3:30 for new residents)

**Fri., April 12. Camera Club. *Elements: Earth, Water, Air, and Fire.*** Speakers: Various Resident Photographers. Wm. Penn Rm., 7:30 p.m.

**Sat., April 13. Light & Lively. *Linda Kenyon as Julia Child.*** Wm. Penn Rm., 7:30 p.m.

### Mon., April 15. NAME TAG DAY.

**Mon., April 15. Book Review. *Killing Commendatore and Anniversaries.*** Reviewer: Larry Flood. Wm. Penn Rm., 11:00 a.m.

**Tues., April 16. CRA Concerns Session.** Opportunity for private discussion with 2 CRA Board members. Music Rm., 10:00 to 11:00 a.m.

**Tues., April 16. Forum Committee. *The Human Microbiome in Health and Disease.*** Speaker: Carolyn Gibson. Wm. Penn Rm., 7:30 p.m.

**Wed., April 17. Community Dialogue.** Speakers: Phil DeBaun, Meg Lemley. Wm. Penn Rm., 11:00 a.m.

**Thurs., April 18. Better Hearing Committee.** Health Center Meeting Rm., 4:00 p.m.

**Thurs., April 18. Sing Along with Sarah Lee. *Musical Prelude to Earth Week.*** Penny's Garden Lounge, 7:15 p.m.

**Thurs., April 18. Documentary Movie. *The Plastic Ocean.*** Wm. Penn Rm., 7:15 p.m.

**Fri., April 19. Crosslands Players. *Come Into the Garden, Maud.*** Wm. Penn Rm., 7:30 p.m.

**Sat., April 20. Crosslands Players. *Come Into the Garden, Maud.*** Wm. Penn Rm., 2:30 p.m.

**Sat., April 20. Movie. *The Lavender Hill Mob.*** Wm. Penn Rm., 7:15 p.m.

**Mon., April 22. Last day to register to vote.**

**Tues., April 23. Earth Week. *Down the Garden Path,*** short walk for Audland & Firbank residents. 4:00 p.m.

**Tues., April 23. Music Committee. *Ransom, Stomberg and Campbell.*** Wm. Penn Rm., 7:30 p.m.

**Wed., April 24. Nature Conservancy Introductory Hike.** Bus leaves Center at 8:30 a.m.

**Thurs., April 25. Adopt-A-Tree Program at Kendal.** Speaker: Casey Groff. Bus leaves Center at 9:30 a.m., returns before noon.

**Thurs., April 25. Earth Day Reception.** Wm. Penn Room, 4:30 to 6:00 p.m.

**Fri., April 26. ARBOR DAY.** Penn Treaty Elms planting., 1:00 p.m. See bulletin board for location.

**Fri., April 26. ARBOR DAY.** Arboretum Annual Meeting. Speaker: Dan Benarcik. Wm. Penn Rm., 7:30 p.m.

**Sun., April 28. Friends Worship Group. *Quaker Education: Learning and Light.*** Speaker: Brian Fahey. George Fox Rm., 3:30 p.m.

**Mon., April 29. Great Decisions. *The Rise of Populism in Europe.*** Moderator: Brigitte Alexander. Wm. Penn Rm., 9:45 a.m.

**The Deadline for the May CHRONICLE articles is April 10.** All articles are subject to editing and cannot be anonymous. Please type and send them by e-mail to [XLChronicle2@gmail.com](mailto:XLChronicle2@gmail.com), or put copy in the Chronicle's open box.